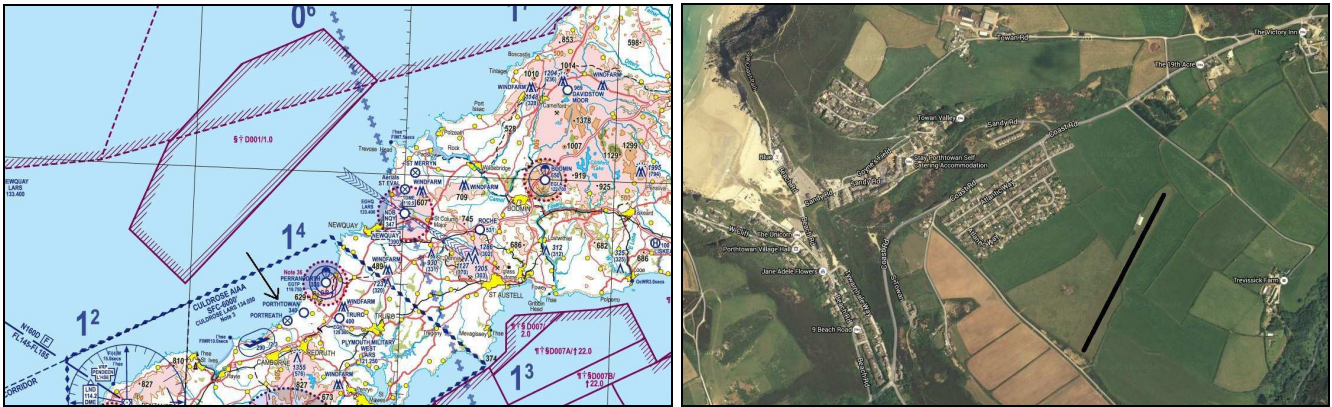


Porthtowan Airstrip



Porthtowan airstrip is a lovely 500m grass strip perched on the high ground directly behind the scenic beach and bay at Porthtowan (Towan is the Cornish 'sand dune'). The strip is owned by brothers Tim and Rupert Major who have been operating there since 1982. They are always very welcoming and will always greet visitors in person.

Orientated 04/22, circuits are 04RH and 22LH, i.e. to the east of the strip.

Please DO NOT fly over the housing estate.

The condition of the strip is never far from immaculate and is level but like all grass strips it has its idiosyncrasies especially being close to the sea, so it is always wise to get a briefing when seeking prior permission, before setting out.

A few points to watch out for are the valley on the approach to RW 04 that can have a high sink rate in a northerly wind. There are power lines on the approach to RW22 at 45 degrees to the threshold and there can be a blanking effect from the hangar in westerly winds where less lift may be expected.

There are no facilities on the airfield as such but it is only a short walk to the beach. If you are a walker there are spectacular cliff paths in both directions.

STRICTLY PPR from Rupert Major on 01872 552802

A/G radio – Safety Comm 135.475

Please call Newquay App 133.400 before transiting their area.

No landing fee.